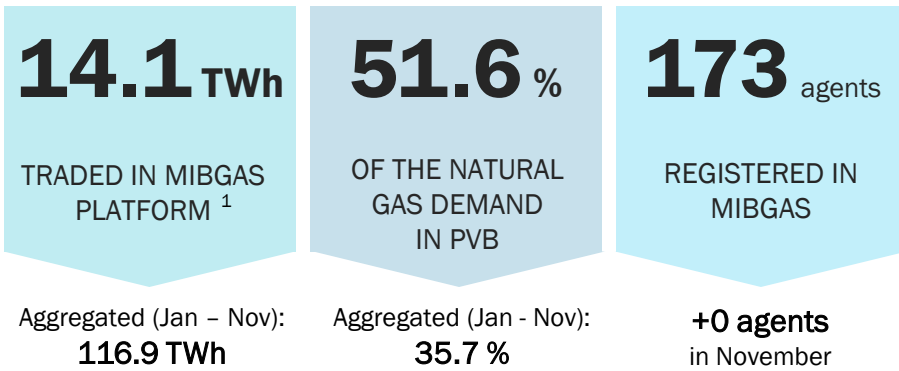
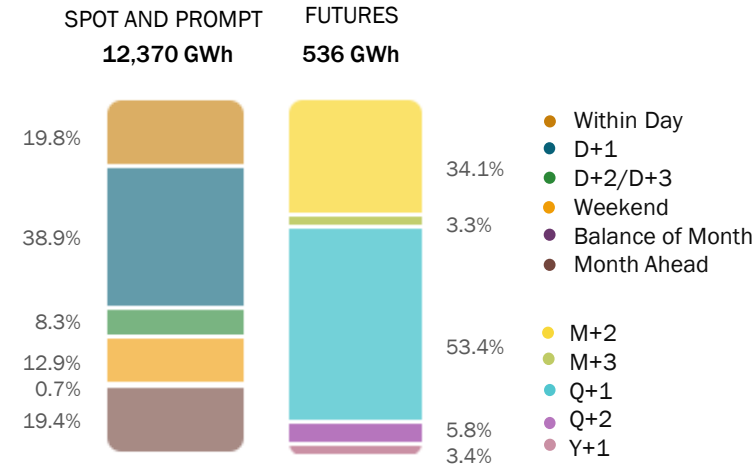


# NOVEMBER 2022

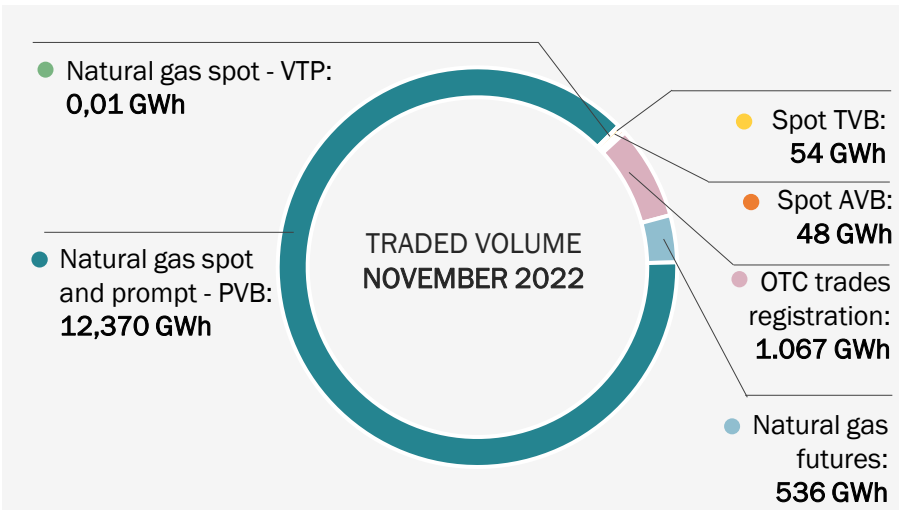
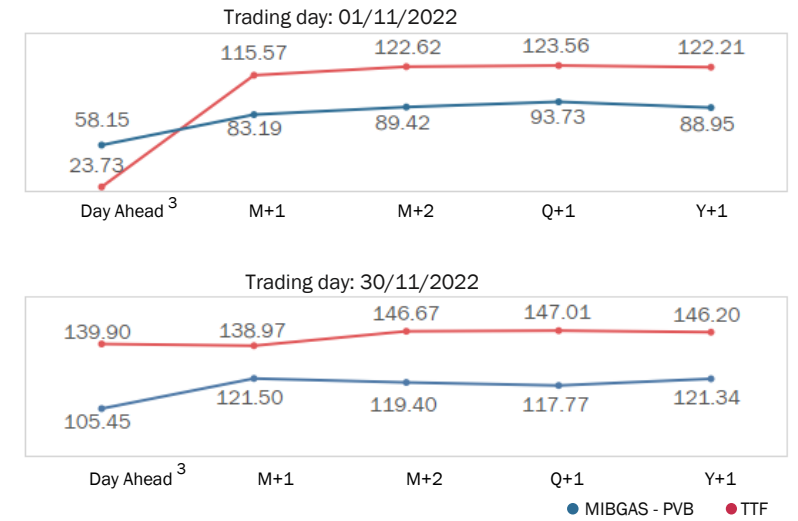
## MAIN ACTIVITY PARAMETERS OF THE ORGANISED GAS MARKET



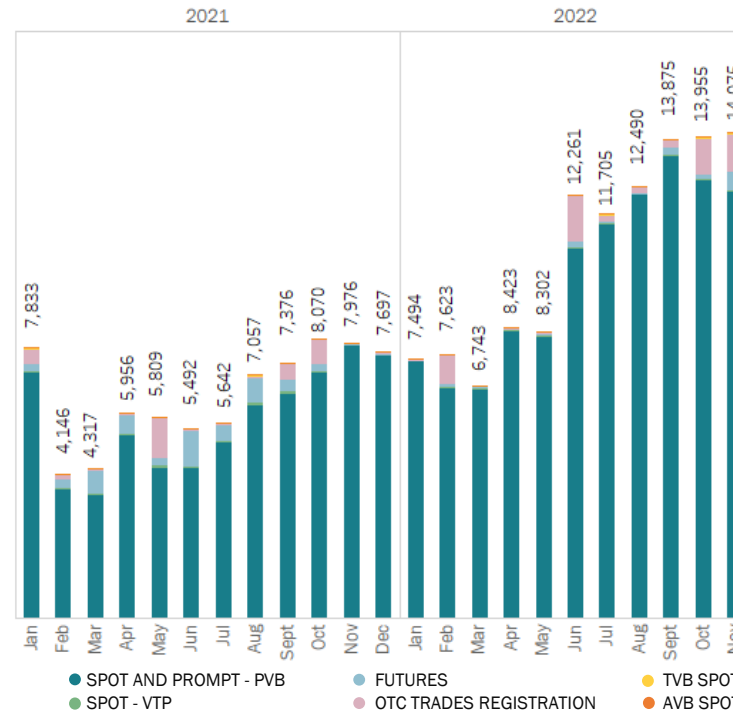
### VOLUME TRADED BY PRODUCT TYPE - PVB



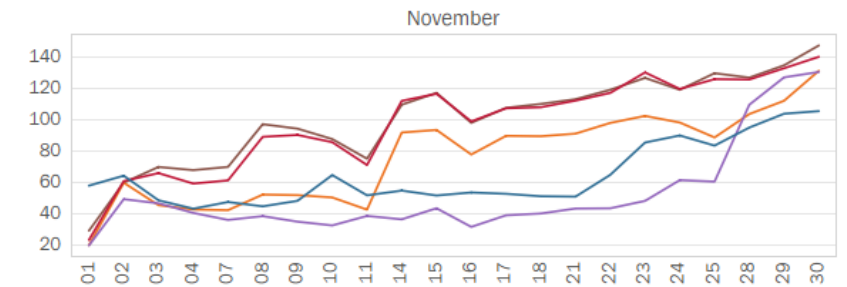
### NATURAL GAS PRICES CURVE (€/MWh)



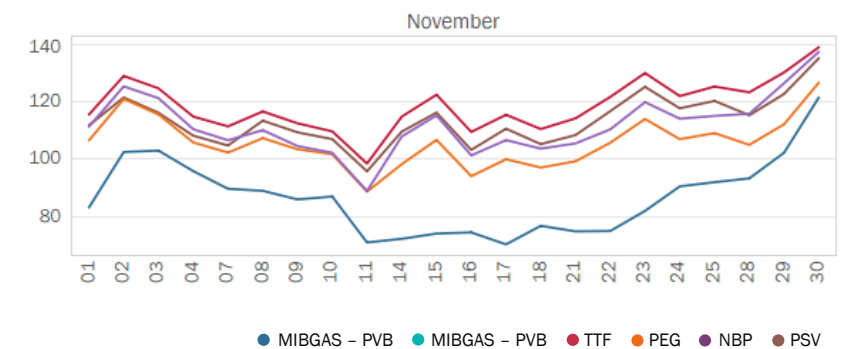
### TRADED VOLUME EVOLUTION (GWh)



### EUROPEAN PRICES: DAY AHEAD PRODUCT<sup>3</sup> (€/MWh)



### EUROPEAN PRICES: M+1 PRODUCT (€/MWh)



### SPOT AND PROMPT SEGMENT

ACTIVE AGENTS <sup>2</sup>		HHI <sup>2</sup>	
BID: 98	ASK: 50	BID: 620	ASK: 1,027

<sup>1</sup> The traded volume includes spot, prompt, futures, OTC trades registration, TVB spot and AVB spot products.  
<sup>2</sup> Monthly average excluding weekends and bank holidays. HHI calculated considering only PVB.  
<sup>3</sup> Day Ahead product is the traded product delivered the following business day to its trading. Volume traded with delivery in PVB is considered for the percentage of demand calculation.  
 Active agents: Agents that participate in the market sending offers.